



****AVAILABLE AUGUST 2026****

****FURNISHED**** ****£175pppw**** A fantastic house, spacious throughout and located very conveniently in West Jesmond. Fully furnished and situated at the top of Osborne Road, this property boasts period features, a private rear garden and is walking distance to West Jesmond Metro as well as the shopping and nightlife found both Acorn Road and Osborne Road!

The property briefly comprises; a ground floor with entrance lobby through into entrance hallway; bedroom one to the front, a large double with bay window; lounge with fireplace and door leading to rear garden; modern kitchen/diner with appliances; the first floor hosts two separate shower rooms; three further double bedrooms; 2nd floor stairway leads to bedroom five, a large double with Velux windows. Externally there is a private garden to the rear and on street permit parking to the front. Fully furnished throughout with gas central heating and double glazed windows, ideal for student or post-graduate sharers!

Available 4th August 2026 | £175pppw/
£3,791.66pcm | Spacious House | 1,483 Sq. ft
(137.8 m²) | Five Double Bedrooms | Two
Shower Rooms | Lounge | Modern Kitchen/
Diner | Three Floors | Great Location | Private
Rear Garden | Permit Parking | Furnished | GCH
& DG | Council Tax Band: D | EPC Rating: E

£3,791 PCM



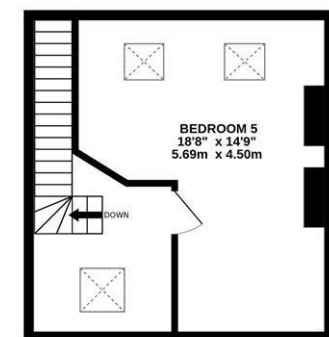
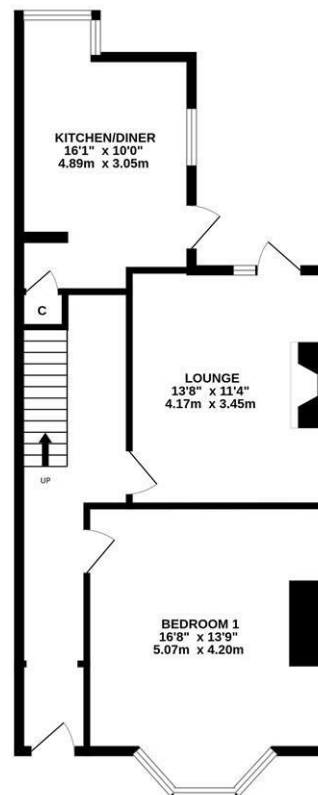
GROUND FLOOR
623 sq.ft. (57.9 sq.m.) approx.



1ST FLOOR
543 sq.ft. (50.5 sq.m.) approx.



2ND FLOOR
317 sq.ft. (29.5 sq.m.) approx.



TOTAL FLOOR AREA: 1483 sq.ft. (137.8 sq.m.) approx.
Whilst every attempt has been made to ensure the accuracy of the floorplan contained here, measurements of doors, windows, rooms and any other items are approximate and no responsibility is taken for any error, omission or mis-statement. This plan is for illustrative purposes only and should be used as such by any prospective purchaser. The services, systems and appliances shown have not been tested and no guarantee as to their operability or efficiency can be given.
Made with Metropix ©2025

IMPORTANT NOTE: These particulars and the descriptions and measurements herein do not constitute representation and whilst every effort has been made to ensure accuracy, this cannot be guaranteed.

